

ADVANTAGE[®] COMBINATIONS

6701


ADVANTAGE[®] 6701

- Pressure Actuated Mixer
- Durable stainless steel balancing piston
- Built-in shutoff for single handle operation
- Removable one piece upper and lower cup seat
- Internal parts of bronze and stainless steel
- Integral dial thermometer
- Bimetal element
- Range 70 to 120°F, 20 to 50°C
- Color coded dual scale; Blue 70 to 90°F, (21 to 32°C), green: 90 to 105°F (32 to 40°C), Red: 105 to 120°F (40 to 49°C (C° shown below)
- Shatterproof convex Lexan[®] crystal
- Type #304 stainless steel case, bezel and stem, (hermetically sealed)
- Meets ASME B403
- Adjustable high temperature limit stop set for 110°F (43°C)
- Cast wall flange and lever handle, chrome plated
- Color coded dial, OFF through H (HOT), with directional indicators
- Maximum operating pressure 125 PSI/860 KPA
- H-03 Shower head, ball joint adjustable spray, arm and flange, 2.5 GPM, (9.5l/min).
- Angle checkstops on inlets

Valve is ASSE · 1016 Certified
 Valve is CSA · B.125-05 Certified

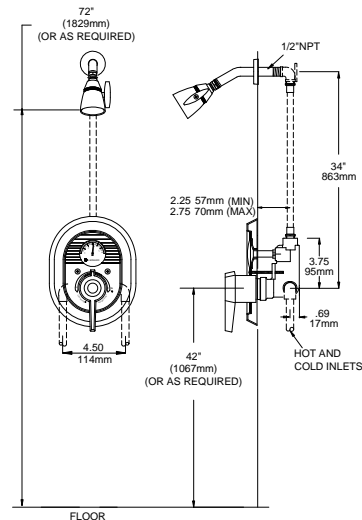


Note: Leonard Valve Company reserves the right of product, or design modifications without notice or obligation.

Note: All piping and fittings not furnished by manufacturer.



WARNING: This product can expose you to chemicals including lead, which is known to the State of California to cause cancer. For more information, go to www.P65Warnings.Ca.gov



Engineer's Approval	Job # _____
	Arch/Eng. _____
	Contractor _____